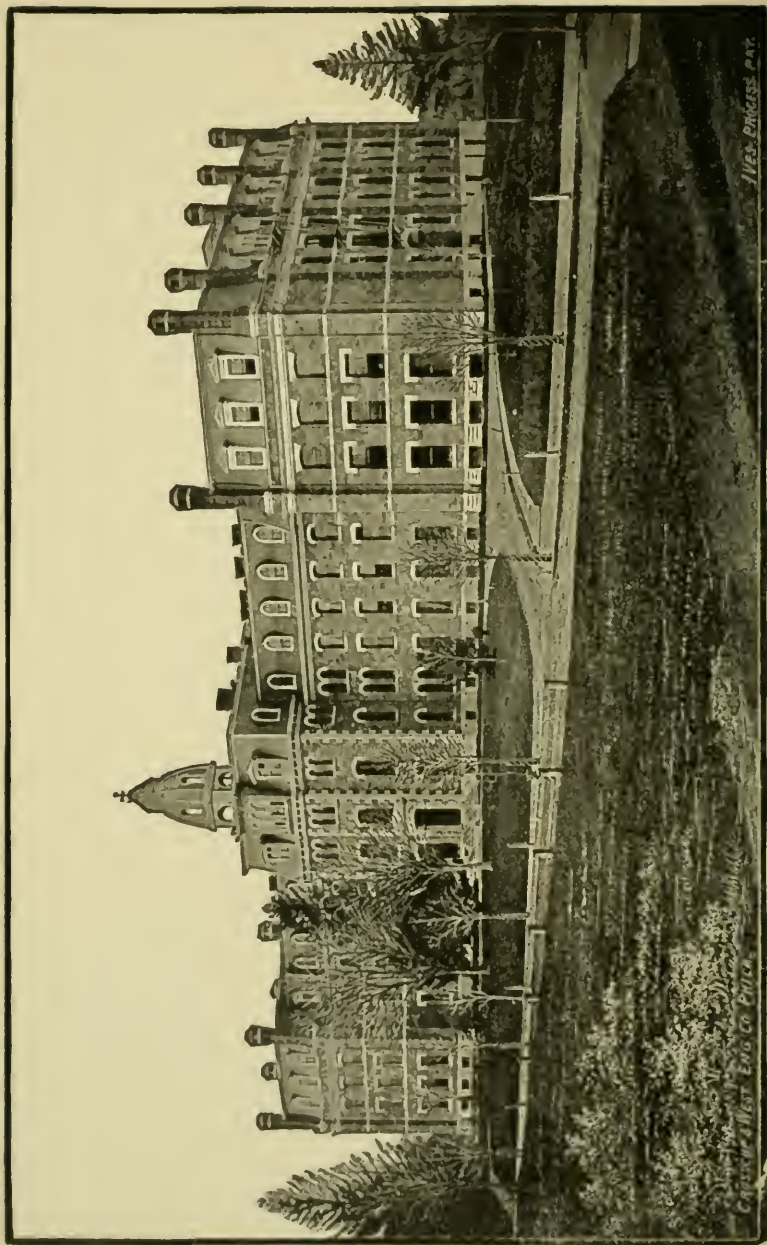


WEST CHESTER
STATE NORMAL SCHOOL,



FIRST DISTRICT,
1886.



STATE NORMAL SCHOOL, WEST CHESTER, PA

JES. BRIDGES. PAT.

Copyright, 1887, by J. B. Lippincott & Co., Philadelphia, Pa.

FIFTEENTH
ANNUAL CATALOGUE

OF THE

WEST CHESTER

State Normal School,

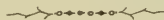
OF THE

FIRST DISTRICT,

AT

WEST CHESTER, CHESTER COUNTY, PA.,

1886.



WEST CHESTER, PA. :
F. S. HICKMAN, STEAM-POWER PRINTER AND PUBLISHER.
1886.

BOARD OF TRUSTEES.



Trustees Representing the Stockholders.

HENRY BUCKWALTER, CHARLES FAIRLAMB, ALFRED P. REID, HERBERT P. WORTH,	}	Term of Office expires in 1887.
--------------------------------------------------------------------------------	---	------------------------------------

JOSEPH W. BARNARD, WILLIAM M. HAYES, MARSHALL B. HICKMAN, EVANS ROGERS,	}	Term of office expires in 1888.
----------------------------------------------------------------------------------	---	------------------------------------

WILLIAM J. HALL, JOHN LENT, J. PRESTON THOMAS, BENTLEY WORTH,	}	Term of Office expires in 1889.
------------------------------------------------------------------------	---	------------------------------------

Trustees Representing the State.

Hon. THOS. V. COOPER, HUGH B. EASTBURN,	}	Term of Office expires in 1887.
--------------------------------------------	---	------------------------------------

NICHOLAS LARZELERE, ROBERT E. MONAGHAN,	}	Term of Office expires in 1888.
--------------------------------------------	---	------------------------------------

THOS. S. BUTLER, JOHN J. PINKERTON,	}	Term of Office expires in 1889.
----------------------------------------	---	------------------------------------

OFFICERS OF THE BOARD.

President,

MARSHALL B. HICKMAN.

Secretary,

ALFRED P. REID.

Committee on Household,

CHARLES FAIRLAMB, BENTLEY WORTH, EVANS ROGERS, WM.
M. HAYES, JOHN LENT.

Committee on Finance,

HENRY BUCKWALTER, J. W. BARNARD, J. PRESTON THOMAS,
WILLIAM J. HALL, HERBERT P. WORTH.

Committee on Instruction,

ALFRED P. REID, HENRY BUCKWALTER, R. E. MONAGHAN,
JNO. J. PINKERTON, THOMAS S. BUTLER.

Committee on Cabinet,

R. E. MONAGHAN, WM. M. HAYES, HERBERT P. WORTH,
WM. J. HALL, J. W. BARNARD.

Treasurer,

ENOS E. THATCHER.

Matron,

MRS. MARY A. FULTON.

Steward,

HARRY S. JOHNSON.

The Regular Meetings of the Board are held at the office of
A. P. REID, Esq., on the *last Monday* in
each month.

THE FACULTY.



GEO. MORRIS PHILIPS, Ph.D., *Principal*,
Teaching and Mental Science.



JACOB B. LEWIS, A. M.,
Latin and Greek



DAVID M. SENSENIG, M. S.,
JOSEPH L. MARKLEY, A. M.,
Higher Mathematics.



C. B. COCHRAN, A. B.,
Natural Sciences and Chemistry.



JUDSON P. WELSH, A. M.,
Grammar and Rhetoric.



MARY E. SPEAKMAN,
Principal of Model School, Practice of Teaching.



ELVIRA Y. SPEAKMAN,
Geography and History.



Mrs. ALMA SAGER WELSH,
Reading and English Literature.



MARY A. CUMMINGS,
Penmanship, Drawing, and Book-keeping

CHRISTINE FAAS,
Vocal and Instrumental Music.

MRS. A. M. SENSENIG, M. E.,
Mathematics and Grammar.

MRS. LIZZIE M. PHILIPS,
Piano.

LYDIA A. MARTIN, M. E.,
Model School.

CARRIE E. BEMUS, M. E.,
Reading, Arithmetic and Grammar.

WALTER J. BALDWIN, M. E.,
Mathematics and Spelling.

A. THOMAS SMITH, M. E.,
Teaching and Reading.

FANNIE A. PYLE, M. E.,
Model School.

HENRY BENNER, B. S.,
Mathematics and Grammar.

CALVIN U. GANTENBEIN, A. B.,
Grammar and French.

HUMPHREY M. CARPENTER,
Violin, Flute, and Violoncello.

THE CALENDAR.

SUMMER TERM—1886.

Tuesday, - - -	June 15th, -	Examination Senior Class.
Wednesday, - -	June 16th, -	“ “ “
Thursday, - - -	June 17th, -	“ “ “
Sunday, - - -	June 27th, -	Baccalaureate Sermon.
Wednesday, - -	June 30th, -	Meeting of Alumni.
Thursday, - - -	July 1st, -	Commencement.
“ - - -	“ - -	Class-Day Exercises.
Friday, - - -	July 2d, - -	Summer Term Closes.

FALL TERM—1886-7.

Monday, - - -	Aug. 30th,	Fall Term begins.
Thursday, - - -	Nov. 25th, -	Thanksgiving.
Friday, - - -	Dec. 24th, -	Christmas Holidays begin.
Monday, - - -	Jan. 3d,	Christmas Holidays end.
Saturday, - - -	Feb. 5th, -	Anniversary Moore Lit. Soc'y.
Friday, - - -	March 18th,	Winter Term ends.

SPRING TERM—1887.

Monday, - - -	Mar. 28th,	Spring Term begins.
Saturday, - - -	May 21st,	Re-Union Aryan Lit. Society.
Wednesday, - -	June 29th,	Meeting of Alumni.
Thursday, - - -	June 30th,	Commencement.
Friday, - - -	July 1st,	Term ends.

CATALOGUE OF STUDENTS.



POST-GRADUATES.

NAME.	POST OFFICE.	COUNTY AND STATE.
Walter J. Baldwin, M. E.,	West Chester,	Chester, Pa.
Henry Benner, B. S.,	“	“
William H. Johnson, B. E.,	Loag,	“
David M. Lichty, B. E.,	Goodville,	Lancaster, Pa.
Susie C. Lodge, M. E.,	Cheyney,	Delaware, Pa.
Eloise Mayham, B. E.,	Stamford,	Delaware, N. Y.
Warren R. Rahn, M. E.,	Grater's Ford,	Montgomery, Pa.
A. Thos. Smith, M. E.,	West Chester,	Chester, Pa.
F. B. Wonsetter, B. E.,	Creamery,	Montgomery, Pa.

UNDERGRADUATES.

LADIES.

NAME.	POST OFFICE.	COUNTY AND STATE.
Aiken, Annie D.	Malvern,	Chester, Pa.
Aiken, M. Ella	“	“
Allcut, Keenah	Thurlow,	Delaware, Pa.
Allen, Anna D.	Port Kennedy,	Montgomery, Pa.
Allison, Carrie M.	Port Carbon,	Schuylkill, Pa.
Amole, Annie B.	Shenkel's,	Chester, Pa.
Angle, Eleanor	Spread Eagle,	“
Arner, E. Lillie	New Mahoning,	Carbon, Pa.
Ashbridge, Anna M.	Willistown Inn,	Chester, Pa.
Babb, May C.	West Chester,	“
Babb, Emma P.	“	“
Barnard, Helen P.	Doe Run,	“
Barnard, Mary T.	Collamer,	Chester, Pa.

SAME.	POST OFFICE.	COUNTY AND STATE.
Bechtel, M. Ella	Providence Square,	Montgomery, Pa.
Bechtel, Helen M.	West Chester,	Chester, Pa.
Beebe, Ida M.	Cheyney,	Delaware, Pa.
Benner, Emma L.	Perkasie,	Bucks, Pa.
Bennett, Minnie M.	3908 Spruce Street,	Philadelphia, Pa.
Berks, Mattie S.	Belfry,	Montgomery, Pa.
Bernard, Angie C.	Cheltenham,	" "
Bishop, Charlotte	West Chester,	Chester, Pa.
Bishop, Katie	"	"
Blair, Anne	Fleming,	Center, Pa.
Boorse, Lizzie A.	Norristown,	Montgomery, Pa.
Bowers, Jennie	Doylestown,	Bucks, Pa.
Bowman, Hattie E.	Warrensville,	Lycoming, Pa.
Brooke, Linda M.	West Chester,	Chester, Pa.
Broomell, Emily H.	Doe Run,	"
Brosius, Lillian M.	Cochranville,	"
Brown, Nellie H.	Taylorville,	Bucks, Pa.
Brownback, Emma E.	Vincent,	Chester, Pa.
Brown, Lilley	West Chester,	"
Burton, Katie L.	Linwood,	Delaware, Pa.
Bye, Jessie A.	Lewisville,	Chester, Pa.
Campbell, Ellathera	Talleysville,	New Castle, Del.
Cassel, Mary L.	Skippack,	Montgomery, Pa.
Chambers, Carrie W.	Nine Points,	Lancaster, Pa.
Clark, Anna R.	Exton,	Chester, Pa.
Clark, Mary E.	Faulkland,	New Castle, Del.
Coates, Lizzie J.	Christiana,	Lancaster, Pa.
Coates, Mary E.	Collamer,	Chester, Pa.
Coates, Mary L.	Cochranville,	"
Cochran, Sarah B.	Northbrook,	"
Conard, Sallie A.	Shoemakertown,	Montgomery, Pa.
Conley, Fannie	Lansdale,	" "
Cornwell, Mary E.	West Chester,	Chester, Pa.
Cox, Lizzie	Sugartown,	"
Craig, Emma	Fairville,	"
Custer, Clara B.	Fairview,	Montgomery, Pa.
Daniel, S. Emma	West Chester,	Chester, Pa.
Darlington, Bertha M.	"	"
Darlington, Alice T.	"	"

NAME.	POST OFFICE.	COUNTY AND STATE.
Darlington, Anna M.	Parkerville,	Chester, Pa.
Darlington, Ethel	Westtown,	"
Darlington, Fannie	"	"
Darlington, Mary A.	Parkerville,	"
Davis, Bertha J.	West Chester,	"
Davis, Sadie	Manoa,	Delaware, Pa.
Davis, Annie	West Conshohocken,	Montgomery, Pa.
Dechert, Eva May	Cressona,	Schuylkill, Pa.
Dock, Florence W.	West Chester,	Chester, Pa.
Dotterer, Alice P.	Cedarville,	"
Dunkle, Annie C.	West Chester,	"
Eachus, Jennie T.	"	"
Eberly, Mary R.	Reinhold's,	Lancaster, Pa.
Edwards, Anna	Elwyn,	Delaware, Pa.
Eisenhart, Clara S.	Kulpsville,	Montgomery, Pa.
Ely, Hattie	Yardley,	Bucks, Pa.
Enriken, Ida D.	West Chester,	Chester, Pa.
Eshleman, Laura	Cochranville,	"
Evans, Jennie	Font,	"
Evans, Sallie C.	West Chester,	"
Eyre, Edith	Dolington,	Bucks, Pa.
Fairlamb, Anne K.	Fairmount,	Lancaster, Pa.
Faulkner, Maggie	Norristown,	Montgomery, Pa.
Fawkes, Tacie E.	Atglen,	Chester, Pa.
Fisher, Annie W.	Lenni,	Delaware, Pa.
Fitzsimmons, Sallie	West Chester,	Chester, Pa.
Fox, Mary E.	Norristown,	Montgomery, Pa.
Fox, Alverda M.	Sunneystown,	" "
Frame, Mary	West Chester,	Chester, Pa.
Freeman, Lulu M.	"	"
Fronefield, Sadie	Bridgeport,	Montgomery, Pa.
Frost, Madge B.	1508 N. 19th St.,	Philadelphia, Pa.
Fulton, Tillie	Romansville,	Chester, Pa.
Funk, Flora E.	East Greenville,	Montgomery, Pa.
Ganster, Rosa M.	Phoenixville,	Chester, Pa.
Gantenbein, Marie F.	Portland,	Oregon.
Gaston, Carrie R.	Honeybrook,	Chester, Pa.
Gause, Lucy G.	122 Calder St.,	Harrisburg, Pa.
Gause, Laura B.	"	"

NAME.	POST OFFICE.	COUNTY AND STATE.
Gephart, Mary	Limerick Station,	Montgomery, Pa.
Gheen, Marion M.	West Chester,	Chester, Pa.
Gheen, Helen	"	"
Gilbert, Eva M.	Kaolin,	"
Glen, Mary	West Chester,	"
Goheen, Elizabeth H.	Cheyney,	Delaware, Pa.
Good, Eleanor T.	West Grove,	Chester, Pa.
Goshen, Annie M.	Lafayette Hill,	Montgomery, Pa.
Green, Lillian	West Chester,	Chester, Pa.
Grier, Clarence E.	Oxford,	"
Grubb, Ada	Vincent,	"
Hain, Jennie P.	Wernersville,	Berks, Pa.
Haines, Lillian	West Chester,	Chester, Pa.
Haines, Mary L.	"	"
Hall, Ella M.	Village Green,	Delaware, Pa.
Hall, Lillian	Sugartown,	Chester, Pa.
Hallman, Harriet M.	Providence Square,	Montgomery, Pa.
Hallman, Maggie	" "	" "
Hambleton, Annie E.	Goshen,	Lancaster, Pa.
Hammond, Hattie R.	Atglen,	Chester, Pa.
Harley, Lizzie	Port Providence,	Montgomery, Pa.
Hatton, Mary	Dingman's Ferry,	Pike, Pa.
Haverstick, Myra	Lancaster,	Lancaster, Pa.
Hawley, May C.	Phoenixville,	Chester, Pa.
Heft, Edith M.	Milford Square,	Bucks, Pa.
Heibeck, Emma	Strasburg,	Lancaster, Pa.
Heibeck, Lizzie	"	" "
Hendricks, M. Alice	Worcester,	Montgomery, Pa.
Henry, Kate S.	Hockessin,	Delaware.
Hicks, Grace	Westbury Station,	Queens, N. Y.
Hiser, Lizzie	Eagleville,	Montgomery, Pa.
Hoffman, Katie C.	Norristown,	" "
Hoopes, Alice	West Chester,	Chester, Pa.
Hoopes, Emily	"	"
Hoopes, Linda K.	"	"
Horn, Mary A.	Dolington,	Bucks, Pa.
Huber, Mattie	Skippack,	Montgomery, Pa.
Hughes, Mary St. J.	Christiana,	Lancaster, Pa.
Hukill, Jessie M.	Middletown,	New Castle, Del.

NAME.	POST OFFICE.	COUNTY AND STATE.
Hurst, Annie V.	West Earl,	Lancaster, Pa.
Huyett, S. Cora	Doe Run,	Chester, Pa.
Jackson, May	Colerain,	Lancaster, Pa.
Jacobs, Annie	Lewistown,	Mifflin, Pa.
Jeffëris, Emmarene	Elam,	Delaware, Pa.
Jeffëris, Sadie L.	West Chester,	Chester, Pa.
Johnson, Lulu C.	Oxford,	"
Jones, Anna W.	Plymouth Meeting,	Montgomery, Pa.
Jones, Marion	West Chester,	Chester, Pa.
Kcene, Nora E.	Kirkwood,	Lancaster, Pa.
Keller, Mary E.	Mechanic's Valley,	Bucks, Pa.
Kemard, Fannie	Wilmington,	New Castle, Del.
Kervey, Elenore B.	West Chester,	Chester, Pa.
King, Nellie S.	141 E. Lemon St.,	Lancaster, Pa.
Kirkbride, H. Emma	Fallsington,	Bucks, Pa.
Krauser, Linnie F.	Pickering,	Chester, Pa.
Larkin, S. Belle	Chelsea,	Delaware, Pa.
Lear, Caroline P.	West Chester,	Chester, Pa.
LeFevre, Amanda E.	Douglass,	Montgomery, Pa.
Lenhart, Sallie L.	West Leesport,	Berks, Pa.
Leshner, Bessie M.	Mt. Joy,	Lancaster, Pa.
Lewis, Mary R.	Christiana,	" "
Lippincott, Emma D.	West Grove,	Chester, Pa.
Logan, Lillian D.	Neshaminy,	Bucks, Pa.
Long, Helen	Breadysville,	"
Loomis, Sallie R.	West Chester,	Chester, Pa.
Lubold, Emma K.	Cedarville,	"
Mackereth, Addie P.	Londongrove,	"
Mahan, Annie A.	West Chester,	"
Mahoney, Regina M. S.	New Castle,	New Castle, Del.
Maris, Mabel	Columbus,	Ohio.
Marshall, Anna B.	Cheyney,	Delaware, Pa.
Markley, Minerva	Schwenksville,	Montgomery, Pa.
Markley, Sylvania	Lansdale,	" "
Marple, Ida M.	Langhorn,	Bucks, Pa.
Martindell, Annie L.	Pineville,	"
Matlack, Mabel	West Chester,	Chester, Pa.
Maule, Emma Z.	Collins,	Lancaster, Pa.
McCorkle, Reba V.	Nottingham,	Chester, Pa.

NAME.	POST OFFICE.	COUNTY AND STATE.
McClelland, Edna D.	West Chester,	Chester, Pa.
Mendenhall, Gertrude E.	"	"
Miller, Ada B.	Russellville,	"
Miller, Hattie	Downingtown,	"
Miller, Lizzie	Reading,	Berks, Pa.
Miller, Rettie	Vincent,	Chester, Pa.
Moloney, Adele M.	Norristown,	Montgomery, Pa.
Morgan, Minnie L.	Oxford,	Chester, Pa.
Moore, Elsie B.	Glen Mills,	Delaware, Pa.
Moore, Katie C.	"	"
Morris, Mary	Line Lexington,	Montgomery, Pa.
Moyer, Mary J.	Souderton,	" "
Newlin, Esther A.	Port Carbon,	Schuylkill, Pa.
Nields, May	West Chester,	Chester, Pa.
Noble, Florence	"	"
Oberholser, Louie S.	Cain's,	Lancaster, Pa.
Ogden, Lizzie F.	Cape May C. H.	Cape May, N. J.
Ozias, Carrie J.	Quakertown,	Bucks, Pa.
Palmer, E. Ethel	Doe Run,	Chester, Pa.
Parker, Mary	Parkerville,	"
Paschall, Sallie	West Chester,	"
Pechin, Annie C.	King-of-Prussia,	Montgomery, Pa.
Pechin, Nettie R.	Radnor,	Delaware, Pa.
Pennypacker, Ellie N.	Marsh,	Chester, Pa.
Perry, Cora R.	Eagleville,	Montgomery, Pa.
Person, Ettie	Chestnut Level,	Lancaster, Pa.
Pharo, Sullie M.	Middletown,	New Castle, Del.
Phillips, Corinne	Uwchlan,	Chester, Pa.
Phillips, Grace A.	"	"
Phipps, Ellgarda T.	Lionville,	"
Pierce, Laura	West Chester,	"
Plush, L. Kate	Shannonville,	Montgomery, Pa.
Poole, Hattie B.	Chelsea,	Delaware, Pa.
Potts, Jennie V.	Pughtown,	Chester, Pa.
Pownall, Maluan H.	Christiana,	Lancaster, Pa.
Pugh, Leona I.	Hickory Hill,	Chester, Pa.
Pyle, Mary	Willowdale,	"
Pyle, Mary A.	West Chester,	"
Reed, Mary E.	Jeffersonville,	Montgomery, Pa.

NAME.	POST OFFICE.	COUNTY AND STATE.
Reeder, Katie T.	West Chester,	Chester, Pa.
Reid, Anna	"	"
Reid, Florence	"	"
Reynolds, Minnie R.	Linwood,	Delaware, Pa.
Righter, Florence L.	Lafayette Hill,	Montgomery, Pa.
Roberts, Josie	West Chester,	Chester, Pa.
Roberts, Laura E.	Huntingdon Valley,	Montgomery, Pa.
Rockhill, Dottie C.	Conshohocken,	" "
Rohr, Allie M.	Dolington,	Bucks, Pa.
Ross, Emma F.	Russellville,	Chester, Pa.
Rowe, Mabel	West Chester,	"
Ruth, Jennie	Durham,	Bucks, Pa.
Scarborough, Annie C.	Wrightstown,	"
Scarborough, Sallie H.	Pineville,	"
Schively, Estelle H.	Tullytown,	"
Scott, Rachie	Oak Hill,	Lancaster, Pa.
Shafer, Minnie A.	Saylorsburg,	Monroe, Pa.
Sharpless, Ellie E.	Sugartown,	Chester, Pa.
Silk, Margaret B. H.	Ashland,	Schuylkill, Pa.
Singles, May R.	Goshenville,	Chester, Pa.
Sleifer, Lottie C.	Bingen,	Northampton, Pa.
Slough, Sadie C.	Worcester,	Montgomery, Pa.
Smedley, Ettie	West Chester,	Chester, Pa.
Smedley, Margaret H.	Goshenville,	"
Smith, Anna Laura	Howellville,	Delaware, Pa.
Smith, Della	Darby,	"
Smith, Edith F.	Oakford,	Bucks, Pa.
Smith, Elsie V.	Lambertville,	New Jersey.
Sporleder, Antonia A.	Audenried,	Carbon, Pa.
Staley, Bertha	Chestnut Hill,	Philadelphia, Pa.
Steele, Anna M.	Russellville,	Chester, Pa.
Steele, Emma	Hamorton,	"
Stokes, Mary R.	West Chester,	"
Stott, Mary L.	"	"
Strode, Hettie G.	"	"
Strode, Mary M.	"	"
Strode, M. Virginia	"	"
Stuck, Emma	Tower City,	Schuylkill, Pa.
Suplee, Bertha M.	Honeybrook,	Chester, Pa.

NAME.	POST OFFICE.	COUNTY AND STATE.
Sweeney, Mary	Media,	Delaware, Pa.
Swisher, Anna A.	Kirkwood,	Lancaster, Pa.
Talbot, Mary	West Chester,	Chester, Pa.
Thomas, Lavina H.	"	"
Thompson, Phebe H.	Kennett Square,	"
Thomson, Hattie	Media,	Delaware, Pa.
Thornbury, Zaidee	Marshallton,	Chester, Pa.
Tomlinson, Katie L.	Southampton,	Bucks, Pa.
Valentine, Itasca E.	Chester,	Delaware, Pa.
Velott, Sallie K.	Marple,	"
Walsh, Mary L.	West Chester,	Chester, Pa.
Walter, Anna B.	"	"
Walter, Anna M.	"	"
Walter, Helen F.	"	"
Walter, Leonore B.	"	"
Walter, Lizzie R.	Kennett Square,	"
Walter, Maggie J.	West Chester,	"
Walter, Maria F.	Warrington,	Bucks, Pa.
Walter, Sallie B.	West Chester,	Chester, Pa.
Walton, Gertrude A.	Pomeroy,	"
Ward, Sue C.	Chester,	Delaware, Pa.
Waugh, Bertha M.	1407 Locust St.,	Philadelphia, Pa.
Way, Willa M.	Romansville,	Chester, Pa.
Webb, Bella M.	ThurLOW,	Delaware, Pa.
Webster, Leurama	Christiana,	Lancaster, Pa.
Welsh, Mary H.	Orangeville,	Columbia, Pa.
Weidemyer, Mary	Pipersville,	Bucks, Pa.
Weikel, Mary F.	Shannonville,	Montgomery, Pa.
Weiss, Emma	Jenkintown,	" "
White, Rebecca	West Chester,	Chester, Pa.
Whitehead, Anna L.	"	"
Wickert, Minnie K.	Emaus,	Lehigh, Pa.
Wickert, Laura I.	"	"
Widdicombe, Anna	West Chester,	Chester, Pa.
Williams, Sallie A.	Williams's Corner,	"
Wood, Bessie R.	West Chester,	"
Woodward, Lizzie	Londongrove,	"
Woodward, Mabel F.	West Chester,	"
Worrall, Floy M.	"	"

NAME.	POST OFFICE.	COUNTY AND STATE.
Worrall, Lillie M.	Marple,	Delaware, Pa.
Worth, Hanna M.	Marshallton,	Chester, Pa.
Yeakel, Hannah	Bally,	Berks, Pa.
Yerkes, Lauretta	Chester,	Delaware, Pa.

GENTLEMEN.

NAME.	POST OFFICE.	COUNTY AND STATE.
Albright, Henry F.	Orwigsburg,	Schuylkill, Pa.
Althouse, Albert C.	Dublin,	Bucks, Pa.
Anson, A. Lincoln	Norritonville,	Montgomery, Pa.
Ashbridge, E. Lewis	Willistown Inn,	Chester, Pa.
Babb, Thomas C.	West Chester,	"
Baldwin, Hadley	Doe Run,	"
Baldwin, J. Lewis	Downingtown,	"
Barnard, Ethelbert	Parkerville,	"
Barnard, S. Martin	Kennett Square,	"
Barnard, William J.	Doe Run,	"
Barnd, Franklin P.	Hegins,	Schuylkill, Pa.
Barnett, Philip P.	Dudley,	Huntingdon, Pa.
Bartleson, Edward E., Jr.	Chester,	Delaware, Pa.
Bartman, John H.	Yerkes' Station,	Montgomery, Pa.
Bartram, George H.	Milltown,	Chester, Pa.
Baum, Harvey H.	Bedminster,	Bucks, Pa.
Bechtel, Morris F.	Kimberton,	Chester, Pa.
Beck, Charles	Stone Church,	Northampton, Pa.
Bell, Edward J.	Lewistown,	Mifflin, Pa.
Beidler, Henry C.	Shelly,	Bucks, Pa.
Beidler, Horace H.	Milford Square,	"
Bentley, James H.	Upland,	Delaware, Pa.
Bevan, William E.	Mauch Chunk,	Carbon, Pa.
Bergey, James R.	Skippack,	Montgomery, Pa.
Bergey, Joseph K.	Telford,	" "
Bicking, Joseph A.	Downingtown,	Chester, Pa.
Birkenstock, Jacob	31st and Thompson,	Philadelphia, Pa.
Bishop, A. Hamilton	West Chester,	Chester, Pa.
Bishop, Gilbert	"	"

NAME.	POST OFFICE.	COUNTY AND STATE.
Blackfan, Edward	New Hope,	Bucks, Pa.
Bock, Robert L.	McKeanburg,	Schuylkill, Pa.
Bonawitz, W. E.	Berrysburg,	Dauphin, Pa.
Borneman, Henry S.	Boyertown,	Berks, Pa.
Boyd, Edward L.	Westtown,	Chester, Pa.
Boyd, R. John	"	"
Boyle, James J.	Tresckow,	Carbon, Pa.
Bradley, Barclay W.	West Chester,	Chester, Pa.
Bradley, Durbin H.	"	"
Brant, Frank S.	Crooked Hill,	Montgomery, Pa.
Bratten, William B.	Lenni,	Delaware, Pa.
Brecht, George K.	Worcester,	Montgomery, Pa.
Brindle, George W.	Lemaster's,	Franklin, Pa.
Brinton, Horace	West Chester,	Chester, Pa.
Brittain, William H.	Hazleton,	Luzerne, Pa.
Brossman, Hillorius W.	Reading,	Berks, Pa.
Brower, Frank C.	Warwick,	Chester, Pa.
Brower, Harry W.	"	"
Brown, Charles T.	West Chester,	"
Bucks, Allen	Stouchsburg,	Berks, Pa.
Bullington, Edwin P.	Doe Run,	Chester, Pa.
Burnite, George W.	Avondale,	"
Bye, Frank P.	Frederica,	Kent, Del.
Carter, Carroll B.	Christiana,	Lancaster, Pa.
Chambers, George C.	Marshallton,	Chester, Pa.
Christman, John F.	Crooked Hill,	Montgomery, Pa.
Clarke, George C.	McVeytown,	Mifflin, Pa.
Cloud, Wendell P.	Unionville,	Chester, Pa.
Clymer, Harvey M.	Line Lexington,	Montgomery, Pa.
Cochran, Isaac S.	West Chester,	Chester, Pa.
Cochran, R. Henry	Selma,	Alabama.
Cope, Warren S.	3816 Market St.,	Philadelphia, Pa.
Crouthamel, Adam H.	Line Lexington,	Montgomery, Pa.
Darlington, Emlen	Pocopson,	Chester, Pa.
Darlington, J. Edgar	Avondale,	"
Darlington, William M.	West Chester,	"
Davis, John R.	Phoenixville,	"
Davis, Walter W.	West Chester,	"
Deery, Samuel	Cambria Station,	"

NAME.	POST OFFICE.	COUNTY AND STATE.
Delp, William S.	Salfordville,	Montgomery, Pa.
Deppin, Charles S.	Wernersville,	Berks, Pa.
Deppin, J. D.	"	"
Derr, Elmer B.	Turbotsville,	Northumberland, Pa.
Detwiler, Clement H.	Ironbridge,	Montgomery, Pa.
Detwiler, Francis C.	Richland Centre,	Bucks, Pa.
Detwiler, Warren H.	Ironbridge,	Montgomery, Pa.
Dorlan, Frank J.	Dorlan's Mills,	Chester, Pa.
Dotterer, Edgar R.	Cedarville,	"
Dutton, Arthur P.	West Chester,	"
Eachus, William W.	Wagontown,	"
Eavenson, Thomas B.	West Chester,	"
Ehl, J. Morris	Pennsbury,	Montgomery, Pa.
Emrey, A. J.	Honeybrook,	Chester, Pa.
Enriken, Samuel L.	West Chester,	"
Espensshade, Abraham	Gordonville,	Lancaster, Pa.
Evans, Chris. D.	Tresckow,	Carbon, Pa.
Farrell, Edward B.	West Chester,	Chester, Pa.
Fetters, Arthur H.	Barnestown,	"
Frame, Walter	West Chester,	"
Frankhouser, J. Winfield	Bowmansville,	Lancaster, Pa.
Freyer, C. W.	Royer's Ford,	Montgomery, Pa.
Funk, Oswin C.	Clayton,	Berks, Pa.
Gantenbein, Calvin U.	Portland,	Oregon.
Garrett, Lewis M.	Cloud,	Chester, Pa.
Gheen, Frank H.	West Chester,	"
Gibbon, William D.	Drifton,	Luzerne, Pa.
Godshall, Wilson H.	Lansdale,	Montgomery, Pa.
Goodman, Ralph	Atglen,	Chester, Pa.
Grasse, L. H.	Hilltown,	Bucks, Pa.
Gross, Joseph Y.	Souderton,	Montgomery, Pa.
Grubb, A. Herbert	West Chester,	Chester, Pa.
Hagerty, Sheward	"	"
Hall, William S.	Sugartown,	"
Hall, William W.	West Whiteland,	"
Hartline, Daniel S.	Pottstown,	Montgomery, Pa.
Hartman, Franklin H.	Milford Square,	Bucks, Pa.
Hatton, John B.	1225 N. 17th St.,	Philadelphia, Pa.
Heilman, Henry F.	Claussville,	Lehigh, Pa.

NAME.	POST OFFICE.	COUNTY AND STATE.
Helsel, Moses T.	Erwinna,	Bucks, Pa.
Hickman, Edgar	West Chester,	Chester, Pa.
Himmelwright, W. G.	Williamsburg,	Virginia.
Hipple, George	Goshenville,	Chester, Pa.
Hodgson, Walter B.	West Chester,	"
Hoffman, Amos H.	Landisville,	Lancaster, Pa.
Hoopes, Arthur	West Chester,	Chester, Pa.
Hoopes, J. Edgar	Doe Run,	"
Horning, Frank L.	Landingville,	Schuylkill, Pa.
Horning, Milton C.	Orwigsburg,	"
Jeffers, Albert W.	Romansville,	Chester, Pa.
Jenkins, Thomas L.	Weatherly,	Carbon, Pa.
Johnson, Harvey L.	Reading,	Berks, Pa.
Johnson, John M.	Loag,	Chester, Pa.
Johnson, Samuel E.	New Hanover,	Montgomery, Pa.
Jones, Willie D.	Garrettford,	Delaware, Pa.
Keeley, Harry M.	Royer's Ford,	Montgomery, Pa.
Kennedy, William J.	Kemblesville,	Chester, Pa.
Kerr, Edward	Downingtown,	"
Kervey, Houghton R.	West Chester,	"
Kirk, Lawrence F.	"	"
Knauer, George	St. Peter's,	"
Knerr, Tilghman J.	Claussville,	Lehigh, Pa.
Knerr, Wilber J.	"	"
Kratz, Daniel B.	Hendricks,	Montgomery, Pa.
Krause, Jacob B.	Crooked Hill,	" "
Krause, Warren B.	"	" "
Kugel, Harry C.	West Chester,	Chester, Pa.
Kugler, J. Howard	Limerick Station,	Montgomery, Pa.
Kulp, William V.	Shannonville,	" "
Kummery, Harvey S.	Milford Square,	Bucks, Pa.
Lancaster, Joseph	Chadd's Ford,	Delaware, Pa.
Landis, Alfred S.	Sonderton,	Montgomery, Pa.
Landis, O. M.	Colebrookdale,	Berks, Pa.
Larkin, Lewis M.	Northbrook,	Chester, Pa.
Larkin, Penrose	Guthrieville,	"
Latshaw, Henry	Vincent,	"
Laudermilch, Charles E.	Palmyra,	Lebanon, Pa.
Lenhart, John M.	West Leesport,	Berks, Pa.

NAME.	POST OFFICE.	COUNTY AND STATE.
Lessig, Hilary	Pottstown,	Montgomery, Pa.
Lewis, John F. T.	Broomall,	Delaware, Pa.
Lewis, Robert B.	Honeybrook,	Chester, Pa.
Lewis, Eugene C.	New Vienna,	Clinton, Ohio.
Linsenbigler, Erwin S.	Trumbauersville,	Bucks, Pa.
Long, William W.	Honeybrook,	Chester, Pa.
Lyndell, Joseph H.	Uwchlan,	"
Markley, J. J.	Weissport,	Carbon, Pa.
Marshall, Charles G.	Northbrook,	Chester, Pa.
Martin, William J.	Chadds' Ford,	Delaware, Pa.
Martindell, E. W.	Pineville,	Bucks, Pa.
Maule, Charles E.	Collins,	Lancaster, Pa.
McClure, Lee	Thornbury,	Chester, Pa.
McCormick, George B.	West Chester,	"
McCoy, Charles M.	"	"
McFarland, George K.	"	"
McGary, Charles S.	Dolington,	Bucks, Pa.
Mearns, Robert W.	Kemblesville,	Chester, Pa.
Mendenhall, Warren	Mendenhall,	"
Mensch, A. B.	Skippack,	Montgomery, Pa.
Mercer, M. Wilbert	West Chester,	Chester, Pa.
Mercer, Norman	"	"
Miller, Edgar T.	Limerick Square,	Montgomery, Pa.
Mode, William A.	Modena,	Chester, Pa.
Moore, Franklin J.	West Chester,	"
Morris, W. Norman	Line Lexington,	Montgomery, Pa.
Morrison, Edwin R.	Octoraro,	Lancaster, Pa.
Mounce, Louis A.	Mullica Hill,	New Jersey.
Moyer, Frank P.	Zionsville,	Lehigh, Pa.
Mullen, William	West Chester,	Chester, Pa.
Neiffer, M. K.	Neiffer,	Montgomery, Pa.
Newcomer, Edwin B.	Collamer,	Chester, Pa.
Noble, C. Morton	West Chester,	Chester, Pa.
Noble, John	"	"
Oat, Charles	"	"
Oat, George R.	"	"
Oat, Joseph H.	"	"
Oberholser, S. Kurtz	Cains,	Lancaster, Pa.
Ortlip, Harry M.	West Chester,	Chester, Pa.

NAME.	POST OFFICE.	COUNTY AND STATE.
Palmer, Charles R.	West Chester,	Chester, Pa.
Parker, John	Parkerville,	"
Passmore, J. Pusey	West Chester,	"
Paxson, Charles S.	"	"
Pechin, Warren R.	Spread Eagle,	"
Pennypacker, Albert J.	West Chester,	"
Phillips, Morris T.	Pomeroy,	"
Plush, Edward E.	Shamonsville,	Montgomery, Pa.
Pool, Stewart N.	McDonough,	New Castle, Del.
Powell, William S.	Exton,	Chester, Pa.
Pratt, J. Herbert	West Chester,	"
Pratt, T. Adams	Glen Mills,	Delaware, Pa.
Preston, Thomas H.	Oxford,	Chester, Pa.
Priest, W. Edgar	Goshenville,	"
Prizer, Elmer T.	Kimberton,	"
Pyle, Willard R.	Willowdale,	"
Raker, Nelson L.	Raker,	Northumberland, Pa.
Ralston, George R.	Kimberton,	Chester, Pa.
Reeder, George	West Chester,	"
Reynolds, Marshall J.	Doe Run,	"
Rhoades, James S.	Westtown,	"
Rixstine, Edwin M.	Pickering,	"
Roberts, Charles C.	West Chester,	"
Roberts, George S.	"	"
Roberts, Isaac G.	"	"
Robson, Harry H.	Cambria,	"
Roos, Charles E.	New Hanover,	Montgomery, Pa.
Rosenberger, H. B.	Colmar Station,	" "
Rutherford, Frank P.	Cochranville,	Chester, Pa.
Schadel, Oscar B.	Ashland,	Schuylkill, Pa.
Schaffer, R. H.	Bingen,	Northampton, Pa.
Scholl, Isaac N.	Pughtown,	Chester, Pa.
Schrack, J. K.	Coatesville,	"
Schrope, John H.	Hegins,	Schuylkill, Pa.
Scott, Theodore W.	Oak Hill,	Lancaster, Pa.
Seal, James G.	Chadd's Ford,	Delaware, Pa.
Seiple, J. Howard,	Centre Square,	Montgomery, Pa.
Sensenig, Barton	Goodville,	Lancaster, Pa.
Shaddinger, A. Wesley	Dublin,	Bucks, Pa.

NAME.	POST OFFICE.	COUNTY AND STATE.
Shutt, Alonzo K.	Harleysville,	Montgomery, Pa.
Shepp, Charles B.	North Reading,	Berks, Pa.
Sittler, Warren C.	Andreas,	Schuylkill, Pa.
Smedley, J. Eugene	Goshenville,	Chester, Pa.
Smedley, Wayne	Milford Mills,	"
Smith, Charles T.	Doe Run,	"
Smith, J. Harvey	Howellville	Delaware, Pa.
Smith, Paul D.	West Chester,	Chester, Pa.
Snyder, Daniel G.	Zionville,	"
Souder, Horace	Souderton,	Montgomery, Pa.
Stauffer, Frank	Royer's Ford,	" "
Stauffer, George A.	Guth's Station,	Lchigh, Pa.
Stauffer, John W.	Royer's Ford,	Montgomery, Pa.
Stong, N. W.	Ashland,	Schuylkill, Pa.
Stott, Clarence A.	West Chester,	Chester, Pa.
Stover, Isaiah M.	Kulpsville,	Montgomery, Pa.
Strayer, Edgar	Patterson,	Juniata, Pa.
Strode, Charles	West Chester,	Chester, Pa.
Stroup, A. M.	Beltzville,	Carbon, Pa.
Swinchart, Howard Y.	Pottstown,	Montgomery, Pa.
Swope, Reuben O.	Wisner,	Bucks, Pa.
Talbot, Charles	West Chester,	Chester, Pa.
Taylor, Richard B.	Charleston,	South Carolina.
Thatcher, Harry S.	Landis Valley,	Lancaster, Pa.
Thatcher, Richard P.	West Chester,	Chester, Pa.
Thompson, L. Howard	Doe Run,	"
Tomlinson, Harry R.	Southampton,	Bucks, Pa.
Townsend, Charles C.	West Whiteland,	Chester, Pa.
Tyson, William S.	Newtown Square,	Delaware, Pa.
Underwood, Roland W.	Jennerville,	Chester, Pa.
Vanderslice, A. Murray	Phenixville,	"
Walker, Samuel H.	Glen Moore,	"
Walter, Andrew J.	Warrington,	Bucks, Pa.
Weiss, Henry L.	Milford Square,	"
Weiss, Lewis L.	"	"
Weisel, Oscar W.	Doylestown,	"
Wells, J. Taylor	Pickering,	Chester, Pa.
Wheeler, George	Pine Grove,	Schuylkill, Pa.
Williams, Irvin C.	Yerkes,	Montgomery, Pa.

NAME.	POST OFFICE.	COUNTY AND STATE.
Windle, Samuel Way	Hamorton,	Chester, Pa.
Winters, John L.	Goodville,	Lancaster, Pa.
Woodward, Charles C.	West Chester,	Chester, Pa.
Woodward, Freddie A.	"	"
Woodward, Roskell E.	"	"
Worth, Richard B.	Marshallton,	"
Yearsley, Pascal	Thornbury,	"
Yetter, George	Stone Church.	Northampton, Pa.
Yocum, John O.	Oaks,	Montgomery, Pa.
Zacharias, Edwin H.	Reading,	Berks, Pa.

SUMMARY.

Number during 1st term,	417
" " 2d "	402
	<hr/>
	819
Number in attendance both terms,	245
	<hr/>
Number of different students during year,	574
	<hr/>
Ladies,	294
Gentlemen,	280

COURSES OF STUDY.

The Course of Instruction for the State Normal Schools of Pennsylvania, embraces two distinct courses of study: *The Elementary Course* and the *Scientific Course*. These courses as fixed by law, and as arranged for this school, are as follows.

THE ELEMENTARY COURSE.

PREPARATORY CLASSES.

School Economy, Orthography and Reading; English Grammar and Composition; Arithmetic; Algebra; Geography and History of the United States; Writing and Drawing.

✎ Orthography, Political Geography and Penmanship (practice and principles) must be thoroughly finished, and a very good knowledge of the remainder of these branches must be shown, also as much drawing submitted as can be done in fourteen weeks of daily exercises—before students will be admitted to the Junior Class.

JUNIOR YEAR.

First Term.—Methods of Instruction; Reading; English Grammar and Composition; Latin Grammar and Reader; Arithmetic; Algebra; Physiology, Physical and Mathematical Geography; Drawing and Vocal Music.

Second Term.—Methods of Instruction and Reading; English Grammar, Latin Grammar and Reader; Arithmetic (except Mensuration) and Algebra; History of the United States; Civil Government; Drawing and Vocal Music; Single-Entry Book-keeping, seven weeks.

✎ An examination by the State Board of Examiners in all of the above branches, except in School Economy and

Methods of Instruction, must be passed before entering the Senior class. See page 26.

SENIOR YEAR.

First Term.—Psychology, embracing the Intellect, Sensibilities and Will, Methods of Teaching and School Management, a prescribed course of Professional Reading, Teaching in the Model School and semi-weekly meetings with the Principal of the Model School to discuss Practice of Teaching; Outlines of Rhetoric, with at least a fourteen-weeks' course in English Literature, including the thorough study of one selection from each of four English Classics, and elocutionary exercises, also a prescribed course of reading; Latin, Cæsar; Plane Geometry; Natural Philosophy.

Second Term.—Methods, History of Education and the reading of General History, the completion of 21 weeks of teaching in the Model School for 45 minutes per day, and semi-weekly meetings in connection therewith, a Thesis on a Professional subject; Rhetoric or English Literature with reading; Cæsar, through the Helvetian War; Geometry and Mensuration; Botany.

For examinations in this year's work, see page 26.

THE SCIENTIFIC COURSE.

Pedagogics.—Moral Philosophy; Logic; Philosophy of Education; Course of Professional Reading, with abstracts, notes, and criticisms, to be submitted to Board of Examiners; a Thesis on a Professional Subject.

Language.—Latin, six books of Virgil, four orations of Cicero, the Germania of Tacitus, or a full equivalent; an equivalent of Greek, French or German, will be accepted for Spherical Trigonometry, Analytical Geometry, Calculus, Mathematical Natural Philosophy, and Mathematical Astronomy; Literature.

Mathematics.—Higher Algebra; Solid Geometry; Plane and Spherical Trigonometry and Surveying, with the use of instruments; Analytical Geometry; Differential and Integral Calculus.

Natural Science.—Natural Philosophy, as much as in Snell's Olmsted; Astronomy, Descriptive and Mathematical; Chemistry; Geology or Mineralogy; Zoology.

History.—General History.

This course requires two full years of hard study. The examinations in it are conducted by the State Board of Examiners, at their annual examination. *But graduates in the elementary course can be examined upon any of the studies of the Scientific Course at any State examination, and can have these branches put upon their diplomas.*

FINAL EXAMINATIONS.

To graduate at a Pennsylvania State Normal School students must attend at least twenty-one weeks. The Faculty first examine the candidates in all the branches of study; if they find them qualified they recommend them to the State Board of Examiners, certifying that they have completed the course of study as required by law, and have taught the required time in the Model School.

The final examinations are conducted by a State Board of Examiners, who are appointed by the State Superintendent of Public Instruction, from the following classes: the State Superintendent, or Deputy Superintendent, who is President of the Board; the Principal of another Normal School; two County or Borough Superintendents from the First District; and the Principal of this Normal School. Each student must receive four votes out of the five in order to pass the examination and to graduate.

The final examination occurs about two weeks before Commencement, the date being fixed by the State Superintendent. The examination is almost wholly in writing and usually lasts three days.

The following important changes in the examinations were made at a recent meeting of the State Superintendent and Normal School Principals. It is expected that they will be confirmed by the next Legislature. They are to take effect not later than in 1887, and in this school are already in operation.

1. Admission to the Senior Class shall be determined by the State Board of Examiners at the annual examination by the Board.

2. In order to be admitted to the Senior Class, students must be qualified in the Junior and Preparatory studies, but the examination in Pedagogics shall be deferred to the Se-

nior year—the examination in the remaining Junior and Preparatory studies to be final.

3. Any person or persons not in actual attendance during the previous Spring session, if recommended by the Faculty may be examined in the Junior and Preparatory studies at the opening of the Fall term, by the Principal and two Superintendents who are members of the State Board, and the examination papers, if approved by these three examiners, shall be submitted to the Superintendent of Public Instruction for approval; and if he approve them, such person or persons shall be admitted to the Senior Class.

4. A certificate setting forth the fact of the passing of the Junior and Preparatory course of study shall be prepared by the Department of Public Instruction, and signed by the Board of Examiners, and shall entitle the holder thereof to admission into the Senior Class of any State Normal School of Pennsylvania at the beginning of any Senior year.

The date of the Fall examination for admission to the Senior Class will be sent upon application to the Principal.

CERTIFICATES AND DIPLOMAS.

A student graduating in the Elementary Course will receive a certificate, in which will be named the branches he has studied, and by which he will be constituted *Bachelor of the Elements*; the diplomas of those graduating in the Scientific Course will enumerate the distinctive branches of this course, and constitute their holders, *Bachelors of the Sciences*.

Regular graduates who have continued their studies for *two years*, and who have practiced their profession for *two annual terms*, in the Common Schools of the State, and who have presented to the Faculty and Board of Examiners a certificate of good moral character and skill in the Art of Teaching from the Board or Boards of Directors in whose employ they have taught, countersigned by the proper County Superintendent, may receive diplomas, constituting them *Masters* in the several studies embraced in the Course in which they graduated, and conferring upon them corresponding professional degrees, as follows:

Master of the Elements.

Master of the Sciences.

These diplomas are permanent certificates of the highest grade. *They confer upon their holders the right to teach the branches named therein in the public schools of Pennsylvania, without further examination.*

Applications for diplomas must be presented to the Board of Examiners at their regular session.

The Normal School law makes it the duty of the authorities of the Normal Schools to grant diplomas or State Certificates to *actual teachers in Common Schools*, without their having attended the Normal Schools as students. The following are the conditions upon which these diplomas will be granted:

1. Each applicant must be twenty-one years of age, and of good moral character, and he must have taught successfully during three successive annual terms in Common Schools in this State, the proof of age to be the declaration on honor of the applicant; and of moral character and the satisfactory discharge of the requisite terms of teaching, a certificate from the proper Board or Boards of Directors, signed by the President and Secretary, and countersigned by the proper County Superintendent or Superintendents.

2. The examination to be in the Elementary or Scientific Course, as the applicant may select, according to the list of studies as printed in the circulars of the State Normal Schools, and approved by the Superintendent of Public Instruction, or in such other studies as may be by the Board of Examiners be deemed equivalent.

3. Any person obtaining a certificate in the Elementary Course may, at the next or any succeeding annual examination, be examined for the higher course, and obtain the proper certificate.

4. Each applicant to prepare and present to the Board of Examiners an original thesis of not less than six folio pages of manuscript, on some professional subject, to be retained at the School where the examination takes place.

5. The examination and certificate to be without expense to the applicant, and the certificate to be full evidence of qualification to teach the branches therein named, in any part of the State, without further examination.

LOCATION, BUILDING, ETC.

The West Chester State Normal School was founded in the year 1871, by the joint efforts of the Trustees and contributors of the West Chester Academy, and the citizens of West Chester and vicinity.

West Chester is a beautiful town of nearly 8,000 inhabitants, the county seat of Chester county, and is pre-eminent for its healthfulness, morality and intelligence. It is about twenty-five miles west of Philadelphia, with which it is connected by two railroads, over which trains run at all hours of the day. Both of these are controlled by the Pennsylvania Railroad, and all trains for West Chester leave the new Broad Street Station. A short branch road connects West Chester with the main line of the Pennsylvania Railroad at Frazer, where close connections are made with the trains on the main line.

THE BUILDINGS

Are situated in the southern part of the Borough, half a mile from the Court House. The main building is new, built of greenstone and marble, 256 by 112 feet, four stories high, with basement. It is one of the finest and handsomest school buildings in the country. The buildings are surrounded by ten acres of beautiful grounds.

A large new building has just been erected a short distance from the school building. This building contains no students' rooms, but in it are placed new boilers of ample capacity to thoroughly warm the whole school building. The first floor is a well-appointed steam laundry. The second and third stories are fitting up for the Scientific Department.

A new building containing a chapel and dining-room, each 80 by 60 feet, completely and handsomely fitted up, will be erected at once. The present chapel and dining-room will

then be made into class-rooms, thus bringing them closer together and in the lower stories, and providing ample quarters for the library, reading-room and other improvements.

STUDENTS' ROOMS.

The rooms are generally arranged for two students each. All are good sized, have high ceilings, are well ventilated and are all thoroughly heated by direct steam radiation. The rooms are comfortably furnished, have single beds, wash stands, bowls and pitchers, and are furnished with woven wire mattresses. The ladies' rooms are all partly carpeted.



ADMISSION, GOVERNMENT, &C.

CONDITIONS OF ADMISSION.

Pupils will be allowed to enter the regular course at any point for which they are actually fitted. They may enter at any time during the Session, and will be charged only from date of entrance.

A prompt attendance at the commencement of the Session is of the utmost importance, both to the progress of the pupil and proper organization of the School.

Students desiring to enter the Institution should make application to the Principal at as early a date as possible.

OUTFIT.

Pupils boarding in the Institution will be furnished with single beds, bedding and wardrobe, and are expected to furnish two pairs of blankets, or an equivalent, looking glass, towels, and table napkins; also an umbrella and a pair of

rubber over-shoes. Many of the students provide carpet for their rooms, thus giving them a very neat and home-like appearance.

Keys, lamps, and wash bowls and pitchers, are furnished by the School, but their cost must be deposited when they are obtained, which deposit will be refunded when they are returned uninjured.

GOVERNMENT.

Self-government is regarded as the only true government, and nothing will be required except that which a *true sense of honor and self-respect* would naturally demand from the individual.

The right is reserved to remove any pupil whose influence is found to be vitiating, from the school.

MORAL AND RELIGIOUS CULTURE.

All students are required to attend the opening exercises of the School in the chapel each day, and all must attend religious services each Sabbath morning in the town, at the churches preferred by their parents or guardians.

LABORATORY.

The new laboratory (see page 28), renders the facilities for Analytical Chemistry even more complete than ever; the department is under the charge of a practical chemist, who has devoted years to this important branch, and who is State Inspector of Foods of Pennsylvania. A full course in qualitative analysis, blowpipe analysis of minerals, &c., is given each term. Students receive instruction without extra charge, but are required to pay for chemicals used, breakage, &c. The removal of the laboratory out of the main school building has removed all the danger often apprehended from such departments.

APPARATUS.

The Institution is supplied with Philosophical and Chemical Apparatus of the most approved kind, a large addition having been made recently. Students in General Chemistry will be charged at the rate of two dollars per term for materials used in experiments before the class.

MODEL SCHOOL.

The Model School is a most important adjunct to the Normal School. If a Normal School fails to inculcate good methods of teaching, it fails to accomplish the great end for which it was established. The Model School should, therefore, be what the name implies, a school in which teacher-students may witness the best methods of instruction, and learn to practice them.

This school is conducted with a view to produce the best results, both in the progress of the pupils, and the attainment of correct methods by the student teachers. Before students are allowed to teach classes in this department, they are required to witness the plans adopted by the Principal and her Assistants. They are then required to teach under the constant supervision of the Principal of the Model School. Two meetings each week are held for the purpose of correcting errors in teaching and suggesting new methods. In addition to the course of training in the common branches, a full course in object teaching and Kindergarten instruction is given by the Principal of the department, who for two years studied the system with Miss Louisa Frankenberg, (a former pupil of Froebel and assistant teacher in his original Kindergarten) and for six years was practically engaged in Kindergarten teaching.

The following course of study is pursued in this department:

D Class.—Language Lessons, Reading, Spelling, Fundamental Rules of Arithmetic, Geography.

C Class.—Language, Reading, Spelling, Arithmetic through Common Fractions, Geography, Map Drawing, Oral Lessons in U. S. History.

B Class.—Language, (including the elements of Grammar and Rhetoric,) Arithmetic, Geography, Map Drawing, U. S. History, Lessons in Literature and Composition, Latin, Reading.

A Class.—Grammar, Arithmetic, Algebra, Physiology, Latin, Botany, Literature and Composition.

✎ Writing, Drawing, Spelling, and Vocal Music, are continued throughout the course.

LIBRARY AND READING ROOM.

There is a well selected library belonging to the School, to which students have access, subject to regulations adopted by the Trustees.

The reading tables are supplied with the leading periodicals of the country, together with the city daily papers, and the local county newspapers, to which students have free access when not on duty required by the school.

LITERARY SOCIETIES.

There are connected with the school two flourishing Literary Societies. The Moore Literary Society, and The Aryan Society, composed of students and members of the Faculty.

The value of these societies as adjuncts of education is so great that students cannot afford to neglect the opportunities they furnish for literary and oratorical culture.

In addition to the school library, each Society has an excellent, and good-sized library for the use of its members.

MUSEUM.

The museum contains a large and valuable collection of specimens, illustrating every department of Natural Science. It was commenced in the year 1826, and has been annually enriched with contributions from every portion of the world. The justly celebrated "Herbariums" of the late Dr. Wm. Darlington, and David Townsend, now in this Museum, are conceded to be two of the most accurate and extensive private collections ever formed in this country.

TEXT BOOKS.

Text Books are sold to students at Philadelphia retail prices ; but all books used in the Elementary Course are furnished on rent to those preferring it.

MUSIC.

The Piano is taught in accordance with the most improved modern methods, and by instructors of eminent qualifications. The pupil is made to feel that an understanding of

the art of music, and a mastery of this instrument, constitute no light accomplishment, and cannot be attained by any short and easy way. All the work done, therefore, is upon a plan which contemplates the higher results of musical culture. No pupil is led to expect a single triumph of attainment except as the fruit of patient and long continued labor. Private lessons in vocal music and voice culture are also given by a most competent teacher. Class instruction in vocal music is given without extra charge.

APPLICATIONS FOR TEACHERS.

Frequent applications are made to the Principal for well trained teachers, and it will be our aim to supply the demand as far as possible. Every year demand is made for more teachers than can be supplied.

CALENDAR.

The school year is divided into two sessions. The Winter Session will begin *Monday, August 30th*, and continue *twenty-eight weeks*. The Spring Session will begin *Monday, March 28th*, and continue *fourteen weeks*. There will be a vacation of one week at Christmas, and one of the same length between the sessions in March.

TERMS.

Tuition and board, including heat, light, and washing, for the Winter Session, \$140; *one-half payable in advance*, the remainder on the sixth of December; for a period less than the session, per week, \$5.25. For the Spring Session, \$65 *payable in advance*; for a period less than the session, per week, \$5.00.

For tuition alone, for Winter Session, \$45, *one-half payable in advance*, the remainder at the sixth of December; for a period less than a session, per week, \$1.65. For Spring Session, *in advance*, \$20; for a period less than a session, per week, \$1.50. For tuition in Model School, Winter Session, \$20; Summer Session, \$10. For a time less than a session, per week, 80 cents.

The "State Aid" of fifty cents a week is deducted from

the bills of those who comply with the conditions stated *below*, making the total cost to teachers \$184 per year.

Teachers whose schools do not end until after the beginning of the session, are charged by the week at *term rates*, if they enter as soon as their schools close, and finish the term.

EXTRA CHARGES.

For instruction on the Piano or Organ, or private lessons in vocal music with use of instrument, for Winter Session, \$34; for Spring Session, \$16. For lessons on other instruments, special arrangements must be made with the Professor of that department.

There are no other extra charges except the cost of the chemicals used by those studying chemistry, before referred to.

DEDUCTIONS.

Students absent two consecutive weeks, or longer, on account of personal sickness, are entitled to full reduction for the time lost.

Those leaving for any other cause will be required to pay for the time spent at the school, at the rate for a period less than a session as specified above.

All bills must be settled with the Principal, who acts in behalf of the Trustees. Bills for one term must be settled before a student will be permitted to enter upon the next term, unless by special arrangement.

STATE APPROPRIATIONS TO STUDENTS AND GRADUATES.

By a recent Act of the Legislature, the following appropriations are made by the State to Normal Students and Graduates.

1. Each student over *seventeen years* of age who shall *sign a paper* declaring *his intention* to teach in the Common Schools of the State, shall receive the sum of FIFTY CENTS *per week* toward defraying the expenses of tuition and boarding.
2. Each student over *seventeen years* of age, who was *disabled in the military or naval service* of the United States, or of Pennsylvania, or whose *father lost his life* in said service,

and who shall sign an agreement as above, shall receive the sum of ONE DOLLAR per week.

3. Each student, who, *upon graduating*, shall sign an agreement to teach in the Common Schools of the State *two full school years*, shall receive the sum of FIFTY DOLLARS.

4. Any student to secure these benefits, must attend the School at least *twelve consecutive weeks*. These benefits will be deducted from the regular expenses of board and tuition.

For several years past the appropriation for this purpose by the Legislature has been insufficient to pay the State aid in full during the Spring Session. But for the past two years the West Chester State Normal School has allowed its students the full amounts set forth above, and we expect to do the same next year.

VISITORS AND VISITING.

Calls on the pupils at other times than during the hours of recreation, seriously interfere with the object they have in view, and therefore, will not be allowed except in case of necessity. Persons desiring to visit the school are cordially invited to do so at any time.

Every absence from a school duty is a loss which cannot be wholly made up. *Parents are earnestly requested not to take their children away from a single school duty, unless it is absolutely necessary. It will interfere with important school duties if a student leaves school earlier than Saturday morning, or returns later than Sunday evening.* Students are not permitted to visit home or away from the town without special permission from their parents or guardians.

TEXT BOOKS USED.

Readers—Monroe, American Educational, Franklin, Lipincott, Sheldon; *Penmanship*—Spencerian; *Arithmetic*—Brooks, Franklin; *Geography*—Harpers, Appleton, Barnes; *Grammar*—Reed & Kellogg; *Geometry*—Wentworth; *Algebra*—Robinson, Brooks, Wentworth; *Book-keeping*—Lyte; *Physiology*—Steele; *Natural Philosophy*—Sharpless & Philips; *Botany*—Wood, Gray, Flora Cestricea; *Chemistry*—Eliot & Storer, Douglass & Prescott; *Zoology*—Nicholson, Orton; *Geology*—Dana's Text Book; *Rhetoric*—D. J. Hill; *History*,

U. S.—Taylor; *Constitution, U. S.*—Townsend; *Drawing*—Walter Smith; *Vocal Music*—L. W. Mason; *School Economy*—Wickersham; *Methods of Instruction*—Brooks; *Mental Philosophy*—Wayland; *Trigonometry and Surveying*—Wentworth; *Analytical Geometry and Calculus*—Loomis; *Astronomy*—Snell's Olmstead, Sharpless & Philips; *Latin*—Jones's First Lessons, Harkness's Grammar, Cæsar, and Prose Composition, Chase & Stuart's Cicero's Orations, Virgil, Sallust, Cicero De Senectute, Livy, Horace; *Greek*—Harkness's First Book, Hadley's Grammar, Boise's Anabasis, Homer; *German*—Cook's Otto's Grammar, German Texts; *French*—Otto's Grammar and Reader; *English Literature*—Trimble, Trimble's Chart, Swinton's Studies, Dana's, Whittier's, Bryant's and Hudson's Selections, Chambers's Cyclopedia; *Orthography*—Raub.

REGULATIONS.

1. Every student is requested on entering, to give the Principal information in regard to the following particulars: Whether he designs fitting himself for a teacher; what length of time he designs remaining in the Institution, and whether he desires to pursue the regular course of graduation.
2. Students are considered members of the school until the Principal is duly notified of their withdrawal.
3. The hours regularly assigned to study are to be faithfully devoted to the preparations of the exercises required.
4. Students are allowed to walk for exercise in the vicinity of the school, but no one is permitted to visit the town or otherwise absent himself, without permission from the principal. Absence from the premises after dusk is not permitted. New acquaintances outside of the school must not be cultivated.
5. Permission to be absent from a recitation must always be obtained from the teacher in charge of the class, *before* the absence occurs; and students desiring to be absent from town must obtain written permission from the Principal.
6. Boarding students who are not present at the beginning of the term, must send to the Principal a written explanation of their absence, or their rooms will be forfeited.
7. Every student must be present at the daily opening ex-

ercises of the school, and at all general exercises in the Chapel unless excused.

8. All objectionable books, papers and cards, found in the possession of students, will be taken and destroyed.

9. Disorderly conduct in the building is prohibited. Each student will be held accountable for any disturbance or damage in his room.

10. No nails must be driven into the walls or ceiling, or alterations be made in the windows, doors, or any appendage of the rooms, without permission from the *Matron*.

11. Students are not allowed to visit one another's room during the regular hours of study, without permission of those in charge of the halls. No change of rooms must take place without permission from the Principal.

12. Each student of instrumental music will have regular hours assigned for practice, during which time no spectator must be present to interrupt the exercises or divert the attention.

13. All students who are tardy, unnecessarily, at meals, must forfeit them, and no one must leave before the rest without good reason, and permission from the person sitting at the head of the table. Any student sick or indisposed, and requiring attention, must have himself reported at once to the *Matron*.

14. It is expected that the ladies and gentlemen of the Institution will treat one another with politeness, but they will not be allowed to be together or to carry on conversation or other communication except in the performance of school exercises, unless by special permission. Neither sex will be permitted to trespass upon that portion of the building assigned to the other.

15. No lady or gentleman attending this institution will meet, walk, or ride with a person of the opposite sex, except in cases of necessity, and then only with the permission of the Principal.

16. Students will not visit the dining room at any other time than meal-time; and neither the domestic departments, boiler room, nor the music rooms without permission.

17. The use of tobacco in any form is strictly prohibited in the building or on the grounds.

18. Students must not enter any saloon, bar-room, billiard or pool room. They are absolutely forbidden to use as a beverage alcoholic liquors of any kind whatever during their connection with the school.

19. Students will be required to attend public worship each Sabbath morning, at such places as their parents or guardians designate.

20. Students are required to take up enough studies to keep them, in the judgment of the Principal, sufficiently employed, but must not take up more than they can study with profit.

21. Students must furnish towels, napkins, looking glass, and two pairs of blankets, and have all articles of clothing *distinctly marked*. Each student is permitted to have twelve pieces washed each week without extra charge.

DIRECTORY OF THE ALUMNI.

PLEASE NOTIFY US OF ANY ERRORS OR CHANGES.

OFFICERS FOR 1885-6.

President—EDWIN R. MUSSELMAN, Class of '83.

Vice President—FRANK B. WONSETLER, Class of '85.

Secretary—CARRIE E. BEMUS, Class of '80.

Managers—LYDIA A. MARTIN, FANNIE A. PYLE, JOSEPH H. BALDWIN.

CLASS OF 1874. ELEMENTARY COURSE.

<i>Name.</i>	<i>Address.</i>	<i>Profession.</i>	<i>Time taught since Graduation.</i>
Margaret Crosby,	Chester, Pa.,	Teaching,	12 yrs.
Anna P. Esler,	Malvern, Pa.,	"	12 "
Ruth E. Griffith,	Chrome, Pa.,		8 "
George G. Groff,	Lewisburg, Pa.,	College Professor,	10 "
Anna S. Hibbs (Washburn),	Chappaqua, N. Y.,		7 "
Ella M. Hunsicker,	2021 N. 17th St., Phila.,		6 "
E. Anna Large (Thorne),	Gum Tree, Pa.,		9 "
Maggie B. Longshore,	Dolington, Pa.,		8 "
Emma J. Longstreth,	1319 S. Broad St., Phila.,	Teaching,	11 "
Mary H. Lynch,	West Chester, Pa.,	"	12 "

CLASS OF 1875. ELEMENTARY COURSE.

Mary J. Bates (Miller),	Glen More, Pa.,		3 "
Dora E. Brosius (Walton),	Ercildoun, Pa.,		8 "
Richard T. Chandlee,	Eureka Springs, Ark.,	Teaching,	1½ "
M. Lizzie Conway,	Monongahela City, Pa.,	Teaching,	8 "
Emily Corson,	Plymouth Meeting, Pa.		
Martha Corson (Poley),	5361 Germantown Ave., Phila.		
Carrie J. Dummig,	Medford, N. J.,	Teaching,	10 "

<i>Name.</i>	<i>Address.</i>	<i>Profession.</i>	<i>Time taught since Graduation.</i>
William T. Gordon,	Coatesville, Pa.,	Teaching,	11 yrs.
Mary J. Hare,	2045 N. 13th St., Phila.,	"	10 "
Anna Jackson,	15th and Race Sts., Phila.,	Teaching,	9 "
Emma Irey (Philips),	Kennett Square, Pa.,	"	7 "
Ida M. John,	Phoenixville, Pa.,	Teaching,	11 "
Lydia A. Martin,	West Chester, Pa.,	Teacher Nor. Sch.,	11 "
Arthur W. Potter,	Wilkesbarre, Pa.,	Prin. of Schools,	11 "
Annie J. Price (Paxton),	331 Saunders Ave., Phila.,	"	2 "
Amos L. Spencer,	Oxford Valley, Pa.,	Teaching,	11 "
Zerna Wollerton,	West Chester, Pa.,	"	"
Sara Z. Woolley (Maddock),	Elwyn, Pa.,	"	4 "

CLASS OF 1876. ELEMENTARY COURSE.

J. Roberts Acker,	Deceased, 1880,	"	2 "
Phebe A. Baker,	Media, Pa.,	Teaching,	8 "
Lizzie Brown (Thomas),	Media, Pa.,	"	8 "
Sallie M. Boyd (Snow),	Wakefield, R. I.	"	"
William Butler,	Snow Shoe, Pa.,	Civil Engineer.	"
Tamazine T. Clark (Fairlamb),	Media, Pa.,	Teaching,	7½ "
Ada A. Coffman,	Phoenixville, Pa.,	Medical Student,	4 "
Clara A. Davis,	Chester, Pa.,	Teaching,	10 "
Abbie A. Eyre,	West Chester, Pa.,	"	10 "
George P. Gabeka,	244 W. 4th St., N. Y. City,	"	10 "
Jennie Knight (Atkinson),	Penn's Park, Pa.,	"	4 "
Wilhelmina B. Linton,	Newtown, Pa.,	"	3 "
Rachel S. Martin,	1642 Green St., Phila.,	"	8 "
Lucy C. Parsons (Tyson),	Knowlton, Pa.,	"	3 "
Ida C. Pyle,	Avondale, Pa.,	"	10 "
Kate A. Stephens,	"	"	5 "
Florence E. Sickel,	Davis Grove, Pa.,	Teaching,	9 "
Sue P. Stackhouse,	315 N. 35th St., W. Phila.,	Physician,	4 "
William D. Thomas,	Media, Pa.,	Lawyer,	2 "
Anna M. Thompson,	Newtown, Pa.,	"	1 "

CLASS OF 1877. SCIENTIFIC COURSE.

George G. Groff,	Lewisburg, Pa.,	College Professor,	9 "
------------------	-----------------	--------------------	-----

ELEMENTARY COURSE.

Ella L. Baldwin,	Wellesley, Mass.,	Student,	5 "
E. Anna Black (Johnson),	Wissahickon, Pa.,	"	6 "
Lizzie F. Criley,	Berwyn, Pa.,	Teaching,	9 "
Zelda H. Daniel,	West Chester, Pa.,	"	2 "
M. Eloene Davis (Wells),	Ardmore, Pa.,	"	2 "
Anna P. Flinn,	Radnor, Pa.,	Teaching,	9 "
Addie C. Graves,	Media, Pa.,	"	9 "
H. Emmie Groce,	Howellville, Pa.,	"	9 "

<i>Name.</i>	<i>Address.</i>	<i>Profession.</i>	<i>Time taught since Graduation.</i>
Virginia Green (Huey),	Lenape, Pa.,		6 yrs.
Hanna M. Johnson (Knickerbocker),	Fairfax, Iowa,		½ yr.
Susie C. Lodge,	Cheyney, Del. Co., Pa.,	Teaching,	8 yrs.
Margaret J. Moffat,	Riegelsville, Pa.,	"	9 "
Annie V. Murray,	Phoenixville, Pa.,	"	9 "
Fannie A. Pyle,	West Chester, Pa.,	Teacher Nor. Sch.,	9 "
L. Emma Pyle,	Toughkenamon, Pa.,	Teaching,	7 "
Laura C. Sorber,	Spring City, Pa.,	"	8 "
Arthur H. Tomlinson,	Locust Valley, N. Y.,	"	8 "
Lydia Turner,	Bloomington, Ill.,	"	8 "
Elizabeth Turner,	" "	"	8 "
John P. Vanderslice,	Deceased, 1879.		

CLASS OF 1878. ELEMENTARY COURSE.

Ella T. Brooke (Bateman),	West Chester, Pa.,		2 "
Hannah R. Caley,	Newtown Square, Pa.,	"	8 "
Hannah Castle,	Upland, Pa.,		5 "
Harriet A. Castle,	" "	"	8 "
Evalena A. Darlington,			
Mary Edmunds,	Denver, Colorado,	"	8 "
Kate R. Moulder,	Phoenixville, Pa.,	"	8 "
Eleanor M. Phillips (Pennock),	Kennett Square, Pa.,		1 yr.
Marian Preston (Lewis),	West Chester, Pa.,		3 yrs.
Fannie M. Stiteler,	Cambria Station, Pa.,	"	8 "
Jane J. Wetherell,	3435 Lancaster Ave., Phila.,	Student.	

STATE CERTIFICATE.

William H. Snyder,	Oxford, Pa.,	Prin. High School,	8 "
--------------------	--------------	--------------------	-----

CLASS OF 1879. ELEMENTARY COURSE.

Emma K. Bossert,	Phoenixville, Pa.,	Teaching,	6 "
Maggie R. Caley,	Newtown Square, Pa.,	"	7 "
Howard Dugan,	Audenried, Pa.,	Mining Engineer,	4 "
D. Tucker Hoffman,	Phoenixville, Pa.,	Draughtsman,	2 "
Joseph E. Meyers,	West Branch, Iowa,	Farming,	1 yr.
Hartman Naylor,	Newark, N. J.,	Teaching,	6 yrs.
Emma P. Nields (Dugan),	Chatham, Pa.,		3 "
Annie J. Passmore (Swayue),	Fairville, Pa.,		2½ "
Sue V. Peters (Thatcher),	Village Green, Pa.,		4 "
Emma T. Pyle	Wilmington, Del.,	Teaching,	5 "
Rachel A. Pyle (Cloud),	Unionville, Pa.,	"	2 "
David J. Reese,	Deceased, 1882,		2 "
Mary F. Whitehead (Durnall),	Ward, Pa.,	"	6 "
Caroline C. Woodward (Cummings),	4702 Girard Ave.,	"	6 "

CLASS OF 1880. ELEMENTARY COURSE.

<i>Name.</i>	<i>Address.</i>	<i>Profession.</i>	<i>Time taught since Graduation.</i>
Mary H. Baldwin,	Romansville, Pa.,	Teaching,	4½ yrs.
Carrie E. Bemus,	West Chester, Pa.,	Teacher Nor. Sch.,	6 "
Mary M. Brinton,	1515 Poplar St., Phila.		
Charles H. Bushong, M. D.,	690 Hudson St., N. Y. City,	Physician,	5 "
Willis Cheyney,	Wilmington, Del.,		2 "
Margaretta S. Crumley,	General Wayne, Pa.,	Teaching,	6 "
Harry G. Kidd,	Howellville, Pa.,	"	6 "
Lizzie F. Kugler (Losey),	Simmahoning, Pa.,		5 "
Mary E. Nelson,	Kelton, Pa.,		1 yr.
Alfred Paxson,	West Chester, Pa.,	Student,	3 yrs.
Fannie J. Simpson,	South Bethlehem, Pa.,	Teaching,	6 "
Belle Vansant,	Cinnaminson, N. J.,	"	6 "
Laura C. Yerkes,	Phoenixville, Pa.,	"	6 "

STATE CERTIFICATE.

Milton E. McLinn,	Hazleton, Pa.,	Theological Student,	2 "
-------------------	----------------	----------------------	-----

CLASS OF 1881. ELEMENTARY COURSE.

Martha J. Acker,	Atglen, Pa.,	Teaching,	5 "
Lizzie L. Buchanan,	N. Denver, Colorado,	"	4 "
Alice E. Claffin,	1100 Columbia Ave., Phila.,	Stenography,	2 "
Leonore E. Davis,	1824 N. 11th St., Phila.,	Student of Med.,	2 "
Ellen M. Greene,	West Chester, Pa.,	Teaching,	5 "
Mary E. Greene,	Kennett Square, Pa.,	"	5 "
Daniel Hartney,	Huntingdon Valley, Pa.,	"	5 "
Addison L. Jones,	Unionville, Pa.,	"	5 "
Madge J. Kerns,	New London, Pa.,	"	5 "
Lizzie J. Lewis,	Lincoln, Va.,	"	5 "
Ella W. Lynch (Thomas),	King-of-Prussia, Pa.,	"	4 "
Alice H. March,	Norristown, Pa.,	"	5 "
Joseph L. Markley,	Haverford College, Pa.,	Teaching Hav. Col.,	3 "
Mary P. McFarland,	Linwood, Pa.,	Teaching,	5 "
G. Winfield Moore,	Ercildoun, Pa.,	"	5 "
Fannie Potts (Crouse),	Cupola, Pa.,		3½ "
Emma Schofield (Gordon),	Chester, Pa.,	"	4 "
Ella M. Turner,	Wilmington, Del.,	"	5 "
Mary D. Walton (Swayne),	Kennett Square, Pa.,		2½ "
Williamanna Webb (Jefferis),	Rosenvick, Pa.,		2½ "

CLASS OF 1882. SCIENTIFIC COURSE.

Arthur W. Potter,	Wilkesbarre, Pa.,	Prin. Schools,	4 "
-------------------	-------------------	----------------	-----

ELEMENTARY COURSE.

Louis B. Ambler,	Ann Arbor, Mich.,	Student,	2 "
Walter J. Baldwin,	West Chester, Pa.,	Teacher Nor. Sch.,	4 "

<i>Name.</i>	<i>Address.</i>	<i>Profession.</i>	<i>Time, taught since Graduation.</i>
Florence Brinton,	Media, Pa.,	Teaching,	4 yrs.
Maggie Ferron,	Londonderry, Pa.,	"	4 "
Frank B. H. Green,	Huntingdon, Pa.,	"	4 "
Lily F. Groff,	Chester Valley, Pa.,	Student,	2 "
R. Addie Kauffman,	Berwyn, Pa.,	Teaching,	4 "
Jesse E. Philips, Jr.,	Haverford College,	Student,	1 yr.
Warren R. Rahn,	Grater's Ford, Pa.,	Teaching,	3 yrs.
Warner P. Roberts,	Warrington, Pa.,	"	2 "
William H. Slotter,	Yardley, Pa.,	"	4 "
H. Bertha Sorber,	McEwensville, Pa.,	"	3 "
Flora L. White,	Edge Hill, Pa.,	"	2 "
Samuel F. Wolf,	Riegelsville, Pa.,	Builder,	1 yr.
Sallie S. Kirk,	Muncy, Pa.,	Teaching,	3½ yrs.

CLASS OF 1883. SCIENTIFIC COURSE.

Joseph L. Markley,	Haverford College, Pa.,	Teaching,	1 yr.
Arthur H. Tomlinson,	Locust Valley, N. Y.,	"	3 yrs.

ELEMENTARY COURSE.

Fannie J. Bailey,	902 Swede St., Norristown, Pa.,		1 yr.
Joseph H. Baldwin,	Chadd's Ford, Pa.,	Teaching,	3 yrs.
Katie W. Bean,	Schwenksville, Pa.,	"	3 "
William H. Beyer,	Bainbridge, Pa.,	Clergyman,	3 "
Mattie I. Dauman,	Lionville, Pa.,	Teaching,	3 "
W. Roger Fronefield,	Sugartown, Pa.,	Student of Law,	2 "
Ella D. Gallagher,	Norristown, Pa.,	Teaching,	3 "
E. Belle Greist,	Guernsey, Pa.,	"	3 "
Mary E. Greist,	"	"	3 "
Lelia C. Hecht,	524 Spruce St., Reading, Pa.,	"	2 "
Mary W. Hawxhurst,	Old Westbury, N. Y.,	"	3 "
Samuel L. Jones,	Edge Hill, Pa.,	"	3 "
Annie Laferty,	Chadd's Ford, Pa.,	"	3 "
Addie L. Lybrand,	1320 S. 15th St., Phila.,	"	3 "
Rettie Moore,	Guthrieville, Pa.,	"	2 "
Edwin R. Musselman,	Trenton, N. J.,	"	3 "
Nellie Nevegold,	Bristol, Pa.,	"	3 "
W. Edwin Priest,	Phoenixville, Pa.,	"	3 "
Mary C. Russell,	"	"	3 "
A. Thomas Smith,	West Chester, Pa.,	Teacher Nor. Sch.,	3 "
Mary H. Walter,	Warrington, Pa.,	Teaching,	3 "

STATE CERTIFICATE.

Jno. V. Ommeren,	Quakertown, Pa.,	"	3 "
------------------	------------------	---	-----

CLASS OF 1884. ELEMENTARY COURSE.

Sallie P. Bedford,	West Chester, Pa.,	Teaching,	2 "
A. Lincoln Beerbower,	Frazer, Pa.,	Merchant,	1 yr.

<i>Name.</i>	<i>Address.</i>	<i>Profession.</i>	<i>Time taught since Graduation.</i>
Charles B. Cloud,	Unionville, Pa.,		1 yr.
Ambrose L. Custer,	Willow Grove, Pa.,	Teaching,	2 yrs.
Lydia E. Eisenhower	Shenandoah, Pa.,	"	2 "
Amelia Evans,	Cambria Station,	"	1 yr.
Oliver D. Frederick,	Kulpsville, Pa.,	"	2 yrs.
Sallie S. Hoopes,	West Chester, Pa.,	"	2 "
William H. Johnson,	Loag, Pa.,	"	1 yr.
Annie W. Keene,	Kirkwood, Pa.,	"	2 yrs.
Clara E. Knerr,	Birchrunville, Pa.,	"	2 "
Florence A. McAfee,	West Vincent, Pa.,	"	2 "
Eloise Mayham,	Stamford, N. Y.,	Teaching,	1 yr.
Francis H. Nuncemaker,	Hatboro', Pa.,	"	2 yrs.
M. Lizzie Poole,	Chelsea, Pa.,	"	2 "
Richard W. Roelofs,	West Grove, Pa.,	"	2 "
Jesse H. Snyder, Jr.,	Kulpsville, Pa.,	"	2 "
Annie C. Sullivan,	Goshenville, Pa.,	"	2 "
Agnes G. Walsh,	Whitford, Pa.,	"	2 "
Hannah Yonker,	Honesdale, Pa.,	"	2 "

CLASS OF 1885. SCIENTIFIC COURSE.

Martha J. Acker,	Atglen, Pa.,	Teaching,	1 yr.
Henry Benner,	West Chester, Pa.,	Teacher Nor. Sch.,	1 "
William H. Beyer,	Norristown, Pa.,	" "	1 "
E. G. Jones,	Wilkesbarre, Pa.,	" "	1 "

ELEMENTARY COURSE.

John M. Carr,	Drifton, Pa.,	Teacher,	1 "
Lizzie C. Crumley,	General Wayne, Pa.,	"	1 "
Allie M. Gibson,	Wilkesbarre, Pa.,	"	1 "
Florence Greist,	Guernsey, Pa.,	"	1 "
Mary A. Hall,	Sugartown, Pa.,	"	1 "
Jacob Hillegass,	Pennsburg, Pa.,	"	1 "
Clara E. Hough,	Media, Pa.,	"	1 "
J. R. Johns,	Reinholds, Pa.,	"	1 "
David M. Lichty,	West Chester, Pa.,	Student,	
Annie Mathias,	Chalfont, Pa.,	Teacher,	1 "
Phebe Passmore,	Marshallton, Pa.,	"	1 "
Irene Roberts,	West Chester, Pa.,	"	1 "
Emma M. Smedley,	Media, Pa.,	"	1 "
Myra W. Storey,	New London, Pa.,	"	1 "
Edith Trapp,	West Chester, Pa.,	"	1 "
Mary E. Worrell,	Kennett Square, Pa.,	Deceased, 1886,	½ "
Mabel E. Way,	Hamorton, Pa.,	Teacher,	1 "
Elmer P. Weisel,	Doylestown, Pa.,	"	1 "
Alice White,	Lahaska, Pa.,	"	1 "
Frank B. Wonsetler,	Creamery, Pa.,	"	1 "

STATE CERTIFICATE.

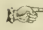
<i>Name.</i>	<i>Address.</i>	<i>Profession.</i>	<i>Time taught since Graduation.</i>
James J. Bevan,	Mauch Chunk,	Teacher.	1 yr.

CLASS OF 1886. SCIENTIFIC COURSE.

Susie C. Lodge,	Cheyney, Pa.,	Will teach.
-----------------	---------------	-------------

ELEMENTARY COURSE.

Lizzie A. Boorse,	Norristown, Pa.,	Will teach.
Sallie A. Conard,	Shemakertown, Pa.,	"
Laura Eshleman,	Cochranville, Pa.,	"
Sallie C. Evans,	West Chester, Pa.,	"
Mary E. Fox,	Norristown, Pa.,	"
Nellie S. King,	Lancaster, Pa.,	"
Wm. V. Kulp,	Shannonville, Pa.,	"
Helen Long,	Breadysville, Pa.,	"
Lizzie F. Ogden.	Cape May C. H., N. J.,	"
Mary E. Reed,	Jeffersonville, Pa.,	"
Laura E. Roberts,	Huntingdon Valley, Pa.,	"
Annie C. Scarborough,	Wrightstown, Pa.,	"
Isaiah M. Stover,	Kulpville, Pa.,	"
George Wheeler,	Pine Grove, Pa.,	"
Hannah M. Worth.	Marshallton, Pa.,	"

 The attention of our graduates is called to the fact that by a recent ruling of the Superintendent of Public Instruction, they can be examined upon any of the studies of the Scientific Course at the Annual State Examination, and have these branches put upon their diplomas. They are urged to consider the great advantage of doing this, and to confer with the Faculty about it.

